

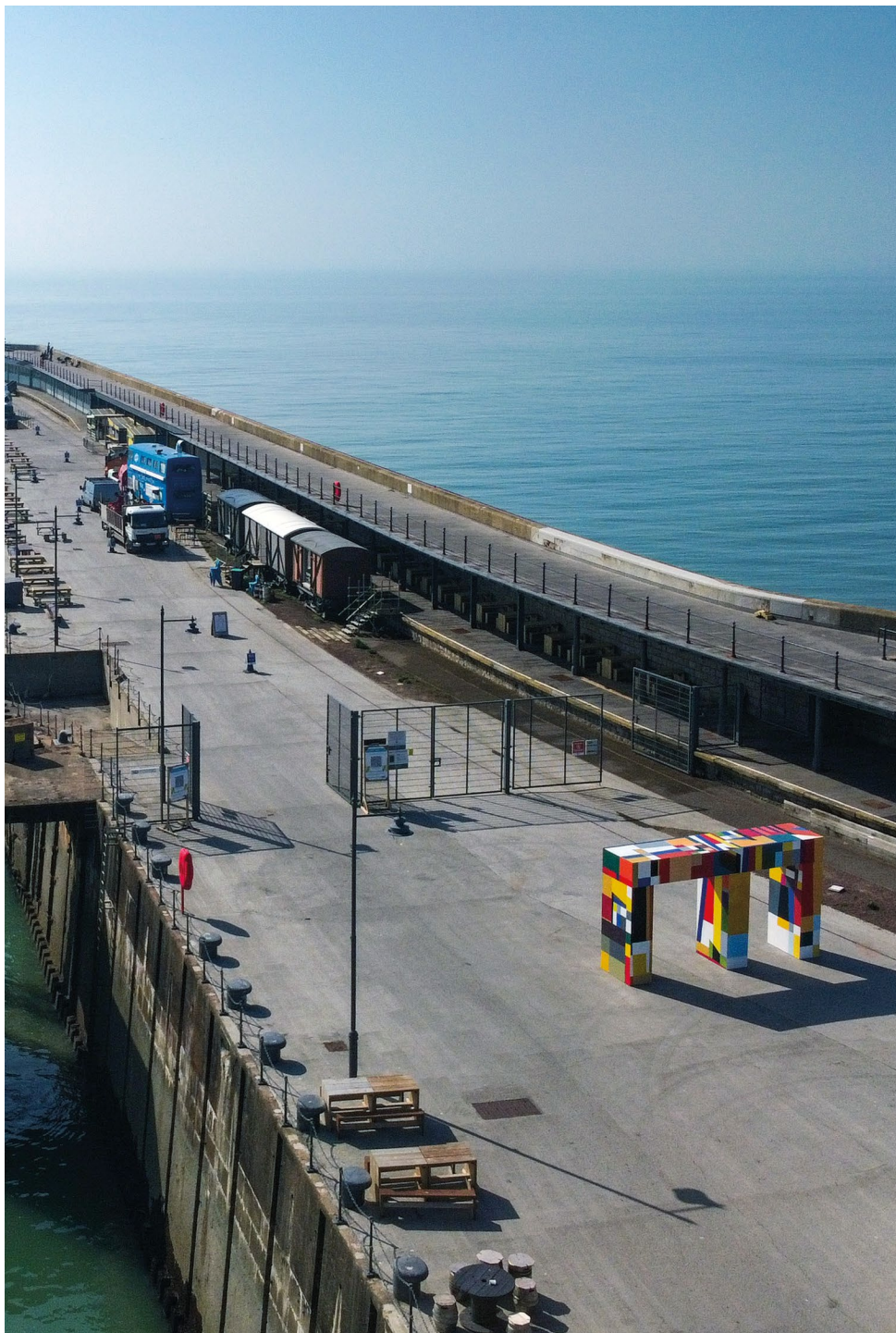


**Creative  
Folkestone**  
Triennial 2021

**Great art by the seaside**  
22 July – 2 November 2021

# The Plot

Free and open to all  
[creativefolkestone.org.uk](http://creativefolkestone.org.uk)



## Folkestone Triennial 2021: *The Plot*

22 July – 2 November 2021

*The Plot* focuses on movement, circulation and narration. It charts (the body's) movement through the environment: the impact of the urban landscape on us and our impact on it. The urban landscape is constantly changing, with people, goods, traffic, money, knowledge and stories circulating through it to keep it alive and in flux. Each of the exhibition's three plots or 'ways' is a story and an image of movement and circulation.

For this exhibition, I invite the visitor to be equally aware of stories and of the urban environment as sensed through our bodies. A plot is a narrative. A plot can also refer to something tangible or verifiable: a plot of ground or plotting a graph. There's a place between these two meanings that is especially creative and interesting, when plotting draws on both conceptual and material realities. A 'conspiracy' is when a group of people aspire to turn 'their' narrative into a reality. In this sense, art is a plot. A shared belief between artists and their audience creates a reality from an idea, rumour or myth.

Most good art is made from materials that make us feel, with narratives that make us think. As an outdoor exhibition *The Plot* is unavoidably contextualised by physical surroundings. Artists are invited to make new artworks that will be seen in relation to,

and may impact on, the environment: both its stories and its bricks and mortar. As curator, I research 'opportunities': sites that have a potential energy for change in the present, development in the future, or for recovery of the past. Then I look for an artist whose practice fits well with that opportunity and who might like to engage with it. I hope this approach to art is as holistic as possible, foregrounding the ways materiality and narrative flow into one another. It is at the interface where reality and myth meet that art and culture, the marvelous and the miraculous, spring into life.

To appreciate art, we need to question as we look, to consider the context as well as the object, and use our own imagination in dialogue with the artist's. Each of the 'ways' that flow through the exhibition evokes a part of Folkestone's history and offers a rationale for why the town appears how it does today. They are presented in historical sequence – a medieval way, an Enlightenment way and an industrial/post-industrial way. But the exhibition's subject is the artworks, not the town. Every place may seem special, but human needs are the same everywhere. If an artist addresses this specific environment with sufficient insight, then the artwork will have universal resonance.

**Lewis Biggs, Curator,**  
**Folkestone Triennial 2021**

Cover: **Rana Begum**, *No. 1054 Arpeggio*  
Left: **Atta Kwami**, *Atsiafu fe agbo nu*  
(*Gateways Of The Sea*) 2020

All artworks have been commissioned for Folkestone Triennial 2021 unless otherwise acknowledged.

# Folkestone Triennial 2021

## Plots A, B and C



## Plot A: St Eanswythe's Way

St Eanswythe was a seventh century Kentish princess who started a religious foundation in Folkestone. The engineered watercourse named after her ran from a spring under the Kent Downs to the present Radnor Park, and along the route of Guildhall Street to supply fresh water to The Bayle (and the Guildhall/Town Hall). Ongoing archaeological and historical research currently suggest that it was built by Benedictine monks in the 12th century. We don't know when someone decided to name it after St Eanswythe and invent the story of her miracle to 'make water run uphill'. Her memory is still celebrated every 12 September, but few Folkestone residents today can show you where St Eanswythe's Water ran for 700 years.

Precise 3-word locations are given for each artwork using what3words – visit [www.what3words.com](http://www.what3words.com) for more information.

The 'shadow numbers' on *The Plot* maps refer to Folkestone Artworks on pages 30–31.



--- Plot A: St Eanswythe's Way



Quarterhouse  
Information centre



Folkestone Museum



Folkestone Artworks  
See pages 30–31



P&R Park and Ride  
See page 36

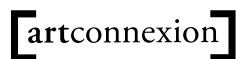


**Patrick Corillon**  
*On the Track of St Eanswythe's Waterway 1*

Co-commissioned for Creative Folkestone Triennial 2021 under the Nouveaux Commanditaires programme of the Fondation de France, curated by artconnexion (Lille).

These five sculptural 'relic-boxes' have been inspired by the artist's dialogue with a group of local residents. Located along the course of the historic St Eanswythe's waterway, each box is different. The words and objects refer to children's games and to St Eanswythe herself: the patron saint of Folkestone who is said to have made water run uphill.

**A1 Location:** [ADMIRINGLY.ALONE.OBVIOUSLY](#)



**Patrick Corillon**  
*On the Track of St Eanswythe's Waterway 2*

See A1.

**A2 Location:** [SHOWCASES.IMPROVES.REJECT](#)



**Patrick Corillon**  
*On the Track of St Eanswythe's Waterway 3*

See A1.

**A3 Location:** [VOTED.CRAFT.OVERPOWER](#)



**Winter / Hörbelt**  
*St Eanswythe's Return*

Wolfgang Winter and Berthold Hörbelt's sculpture marks the place where St Eanswythe's Water used to run, and the scar on the urban landscape created by the gyratory. The dark steel wall and bright tree-fountain suggest the blockage of the watercourse and its possible future return. The sculptural tree replaces one that died while the artwork was in planning.

**A4 Location:** [RUMBLE.INCREASED.OMBUDESMAN](#)



**Patrick Corillon**  
*On the Track of St Eanswythe's Waterway 4*

See A1.

**A5 Location:** [GEESE.BOUNDED.MESS](#)



**Stephenie Bergman**  
*Blood Branches*

This two-part ceramic sculpture was inspired by William Harvey's discovery that oxygenated red blood flows in the arteries and de-oxygenated blue blood flows in the veins. The artist saw an affinity between the branches of trees and the blood system in mammals. The artwork is presented within the William Harvey exhibition at Folkestone Museum from Wednesday 28 July, opening hours Tuesday-Saturday, 10am-4pm. [www.folkestonemuseum.co.uk](http://www.folkestonemuseum.co.uk)

**A6 Location:** [FOLLOWING.CUPBOARDS.SNATCHED](#)



**Sam Belinfante**  
*On the Circulation of Blood*

This 'performed sculpture' is named after William Harvey's book that explains the blood system of mammals. The netting and poles here in Market Place are carried by performers to two other key sites in the town. The artist has commissioned the composition of several duets to accompany the performers, who also carry lights. Please see the website for performance times: [www.creativefolkestone.org.uk](http://www.creativefolkestone.org.uk)

**A7 Location:** [SUNBLOCK.CAMCORDER.AWARDS](#)



A8

**Patrick Corillon**  
***On the Track of St Eanswythe's Waterway 5***

See A1. This, the last of five sculptures, marks the end-point of the waterway – a pond that served the needs of the nearby Priory, as well as the military position on The Bayle. From here the surplus water (the waterway had a powerful flow) had to find its way back down to the Pent via The Old High Street and Mill Bay.

**A8 Location:** [MARMALADE.DIALECTS.ROOFS](#)



A9

**Stephenie Bergman**  
***Blood Letters O***

These ceramic sculptures refer to blood types, and they are placed on these pathways to draw attention to the circulation of people through the town as a sign of health, like the circulation of blood in the body. Parade Steps used to connect the military position on The Bayle, commanding the harbour, with the strand below.

**A9 Location:** [ANALOGY.CREATURES.PURELY](#)



A10

**Stephenie Bergman**  
***Blood Letters AB***

See A9. There used to be a slaughterhouse at the top of the Bail Steps, and the overflow of water from the Bayle Pond would have been used to clean out the blood there before draining down these steps.

**A10 Location:** [OTTERS.SHUDDERS.DECREASE](#)



A11

**Stephenie Bergman**  
***Blood Letters B***

See A9. This ancient pathway has recently been re-opened to create a direct connection between The Old High Street and Tontine Street during the daytime.

**A11 Location:** [VILLA.MEGAWATT.VISUAL](#)



A12

**Jacqueline Poncelet**  
***Shimmera***

The striking patterns of shimmer discs decorating the gables at each end of the 'cabins' have been designed by the artist to celebrate and articulate the energy of the recently recovered public footpaths between The Old High Street, Payers Park and Tontine Street. The designs have a green accent heading towards the Park, and a blue one travelling towards Tontine Street and the sea.

**A12 Location:** [FAKES.REPORTER.APPARATUS](#)



A13

**Stephenie Bergman**  
***Blood Letters A***

See A9. St Michael's Steps used to connect the streets on the high ground above with the tidal inlet now hidden beneath Tontine Street.

**A13 Location:** [HUMBLE.ADMIRINGLY.ALLOWABLE](#)



A14

**Christopher Houghton Budd**  
***Forgiving Light***

This circle of light-posts marks the centre of the town: the point where a bridge crossed over the mouth of the Pent River allowing traffic from The Old High Street to gain access to the fishing village around what is today The Stade. Hoping for a more beautiful and pedestrian-friendly central area, the artist calls it The Plaza.

**A14 Location:** [ENGRAVING.GRAPH.FIELD](#)

## Plot B: William Harvey's Way

William Harvey (1578–1657) was born in Folkestone in a house near the Guildhall whose household needs were supplied by St Eanswythe's Water. He was educated in Folkestone before travelling to Padua to study medicine. He was the first physician to describe the systemic circulation and properties of the blood in mammals in his

book *De Motu Cordis*, 1628. The book was revolutionary for its method of argument from experimental procedure and for its description of the heart and circulation of the blood. Harvey became Royal Physician to James I and Charles I, and his statue stands overlooking the sea at the junction of Castle Hill Avenue and The Leas.



B1

**Pilar Quinteros*****Janus Fortress: Folkestone***

Co-commissioned for Creative Folkestone Triennial 2021 and England's Creative Coast Waterfronts with Turner Contemporary.

Janus was the Roman god of beginnings and transitions, between past and future. The sculpture faces towards both mainland Europe and England, connecting them, as Folkestone has always done whether as a fort or a port. It is made of chalk and will disintegrate over the course of the exhibition, as a reflection on the erosion of the coastline.

**B1 Location:** [WARBLERS.REMODELS.VIBE](http://WARBLERS.REMODELS.VIBE)

England's  
**CREATIVE  
COAST**  
Cultural adventures around  
the South East Coast

B3

**Sam Belinfante*****On the Circulation of Blood***

The old net drying ground and St Peter's School suggest 'industry and education'. Please see the note at A7, and visit the website for performance times:

[www.creativefolkestone.org.uk](http://www.creativefolkestone.org.uk)

**B3 Location:** [GENTLE.WATCHDOGS.NERVY](http://GENTLE.WATCHDOGS.NERVY)

B4

**Diane Dever*****Urban Room Folkestone 2017***

Commissioned for Creative Folkestone Triennial 2017.

In 2017 *Urban Room Folkestone (UR Folkestone)* occupied The Customs House on the Harbour Arm. It continues as an idea, an information resource and as a programme of activities, housed in this former Tourist Information pavilion. *UR Folkestone* is dedicated to remembering the history of the town and encouraging debate about its future.

**B4 Location:** [WICKED.LINES.POUNCES](http://WICKED.LINES.POUNCES)

B5

**genuinefake*****FORTUNE HERE (for Urban Room Folkestone)***

Inspired by The Rotunda amusement park formerly on this site (demolished more than 15 years ago) this artwork is a contribution to *UR Folkestone's* programme. Its 'infotainments' promote alternatives to current models of urban production and co-operation that might be better aligned to the aspirations and needs of communities. More fundamentally, they aim to encourage people to be active influencers themselves.

**B5 Location:** [TORCHED.PHOTOS.STATED](http://TORCHED.PHOTOS.STATED)

B6

**Gilbert & George*****RESPECT ROAD 2020***

Exhibited courtesy of the artists.

Every building site presents itself as the work of 'considerate contractors' and this artwork overlooks Folkestone's biggest construction site. The artists have always created pictures that capture the essence of contemporary urban life and reflect on the meanings that we find whenever our thoughts engage with our looking.

**B6 Location:** [TONSILS.FUEL.STINT](http://TONSILS.FUEL.STINT)

B2

**Mariko Hori*****Mellowing the Corners***

Folkestone's Zig-Zag Path was built in the 1920s to appear as natural rocks and grottos. Designed by James Pulham, this fake rock surface encases waste material which is now wearing thin and exposing the rubbish within. This story inspired the artist to create Pulhamite 'boulders' containing objects donated by residents – acting as time capsules as the objects gradually appear in the future.

**B2 Location:** [RABBLE.DODGES.WRENCHING](http://RABBLE.DODGES.WRENCHING)



Kingdom of the Netherlands



B7

**Bill Woodrow**  
***The Ledge* 2017**

Commissioned for Creative Folkestone Triennial 2017.

This modernist composition, echoing the white cliffs beyond, supports figures of an Inuit and a seal, and sits on a black puddle shape. Sited by the shore, the strong horizontals suggest rising water levels resulting from the disappearing polar ice caps, an iceberg melting into a pool of oil. The figures are on thin ice.

**B7 Location:** PROSPERED.PICNIC.MENTIONED



B8

**Mariko Hori**  
***Mellowing the Corners***

See B2. This time-capsule boulder takes its place as one among others on the beach.

**B8 Location:** REMOTES.DOCTOR.TONAL



B9

**Rana Begum**  
***No. 1054 Arpeggio***

Commissioned for Creative Folkestone Triennial 2021 in partnership with Folkestone & Hythe District Council.

The graduated colour scheme and the insistent rhythm of the design have turned a half-mile marching rank of beach huts into notes of colour on a keyboard. Arpeggio is a musical term meaning a chord broken into a sequence of notes played in an ascending or descending order.

**B9 Location:** SOIL.LIMITS.RESTS



B10

**Sam Belinfante**  
***On the Circulation of Blood***

This amphitheatre in the Lower Leas Coastal Park suggests a place for leisure, sport and culture in the town. Please see A7 and the website for performance times:

[www.creativefolkestone.org.uk](http://www.creativefolkestone.org.uk)

**B10 Location:** BACK.CORROSIVE.RESULTS



B11

**Jason Wilsher-Mills**  
***I Am Argonaut***

Commissioned for Creative Folkestone Triennial 2021 and produced by Shape Arts as part of the Adam Reynolds Award.

This contemporary monumental figure describes and expresses the world as experienced by the artist, whose disabilities were caused by a disease of the blood cells. It references the artist's research into the life and work of William Harvey, whose monument stands close by.

**B11 Location:** SUNBLOCK.SCRIPT.LATCHED



B12

**Gilbert & George**  
***BLOOD CITY* 1998 and  
*BLOOD ROADS* 1998**

Exhibited courtesy of the artists.

Each of these pictures present the same two ideas in counterpoint: the representation of the city through the mapping of streets and blocks of housing, and the 'mapping' of blood cells moving through veins and arteries.

**B12 Location:** AMBUSHED.EARMARKED.HARMONY



B13

**Atta Kwami**  
***Dusiadu (EveryTown)* 2020**

This group of sculptures are in conversation with each other; and corralled by the flowing traffic. Derived from traditional West African street-vending kiosks, kiosks like these are sites for the exchange of money and goods, for the currency of knowledge, and for the circulation of stories. The artist is from Ghana, and the title is in the Ewe language.

**B13 Location:** CALLER.SUCKLE.ENGINEERS

# Plot C: The Milky Way

The Milky Way was the informal name for Foord Road South. In the last quarter of the 19th century, horse-drawn wagons hauled coal from the Harbour up the Pent Valley to the Gasworks and returned the same way laden with chalk to be used as ballast by the ships. The road was stained black by coal dust and then white by chalk falling from the wagons, making it look – so a poetic contemporary suggested – like the Milky Way. The Pent River was the source of power for the town’s mills industry, and its valley is now the location for much of its post-industrial economic and cultural activity. The Milky Way can be taken as an image for the transience of Folkestone’s ‘industrial’ cycle; it is now a cul-de-sac.





C1

### Richard Deacon *Benchmark 1-5*

Wooden benches on concrete bases provide comfort for visitors enjoying these beautiful gardens. The artist noticed a number of empty bases and was inspired to respond with a series of bench-like sculptures. The rich and varied ecology of the gardens suggested that he choose different colours of granite in a medley for the composition of each sculpture.  
C1 Location: BRILLIANT.BLEACH.SECRETS



C2

### Mariko Hori *Mellowing the Corners*

See B2. This time-capsule boulder stands in for a topiary bush that was missing from the garden's formal design.  
C2 Location: EMBLEM.BLEND.FOREHEADS



C3

### Bob and Roberta Smith *FOLKESTONE IS AN ART SCHOOL 2017*

Commissioned for Creative Folkestone Triennial 2017.  
Invited to consider whether an art school should be re-established in Folkestone, the artist realised that all the skills, knowledge and facilities required were already present in the town – they just needed to be recognised and appreciated differently. His artwork consists of this 'declaration', along with 13 'pedagogical videos' available on our website: [www.creativefolkestone.org.uk](http://www.creativefolkestone.org.uk)  
C3 Location: DIALECTS.BUDGET.DEBATE



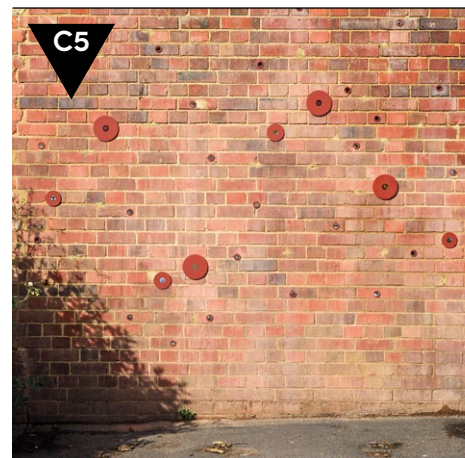
C4

### Gilbert & George *BEHAVE 2014*

Exhibited courtesy of the artists.

The picture draws the attention of visitors arriving in the town to the contested powers given to the police to disperse "groups of two or more persons in any public place if their presence is likely to result in any members of the public being intimidated, harassed, alarmed or distressed".

C4 Location: OFFICE.TWEE.GOLFING

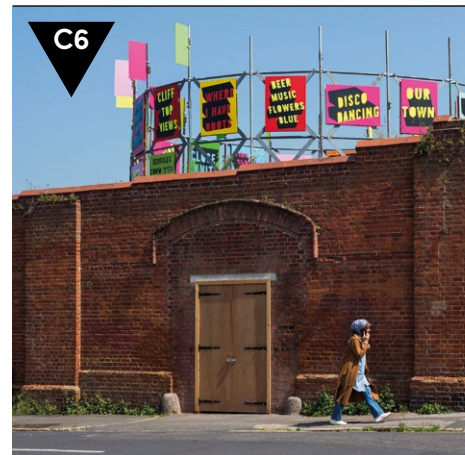


C5

### Jacqueline Poncelet *Looking Ahead*

The site on the other side of this wall has been acquired by Folkestone & Hythe District Council for development. Before it was a gasworks, this was where Folkestone's first middle class villas were built. The artist creates a sense of celebration with the kaleidoscopes and bee-eye lenses piercing the wall like a galactic firework display. She invites us to look towards the railway viaduct, the hills and the future.

C5 Location: TICKET.DRAWN.LANDMARK

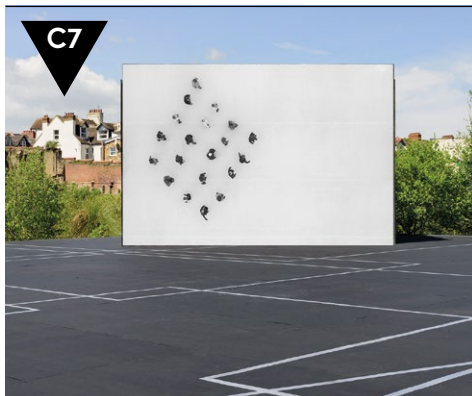


C6

### Morag Myerscough *Flock of Seagulls Bag of Stolen Chips*

The artist has created a joyful welcome area and platform offering visitors a view over the whole former Gasworks site and its environment. She invited local residents to talk about the site and has incorporated their words into the design, providing a moment to celebrate the site and its future development.

C6 Location: ACROBATS.SWOONING.TOWEL



C7

**Jacqueline Donachie**  
***Beautiful Sunday***

The Gasworks social club remained active on the derelict site for many years. The artwork 'celebrates all the dance floors of Folkestone' past and present – you can find them marked out on the surface of the stage. The film documents a line dance called *The Slosh*. *Beautiful Sunday* is the title of the 1972 hit song by Daniel Boone.

**C7 Location:** HECKLER.RESTING.INCUR



C8

**Jyll Bradley**  
***Green / Light (For M.R.) 2014***

Commissioned for Creative Folkestone Triennial 2014.

The sculpture's aluminium poles and green acrylic sheets are designed to catch the light, and their circular footprint is that of a demolished gasometer. The outer square is set out as a hop field, the poles and twine drawing on Kent's historic agriculture and the artist's childhood memories.

**C8 Location:** JUSTIFIES.INDOORS.CRISPS



C9

**Shezad Dawood**  
***The Terrarium***

A virtual reality artwork situating viewers 300 years into the future: the Earth's surface is submerged in water and you have been modified into a cephalopod hybrid and released from a laboratory into the now connected Kent-Baltic coastline. The VR is presented alongside *Shifter: The Terrarium Triad*, a score by Graham Fitkin.

[www.upprojects.com/projects/the-terrarium/](http://www.upprojects.com/projects/the-terrarium/)

For opening times please visit:

[www.kent.gov.uk/lib3](http://www.kent.gov.uk/lib3)

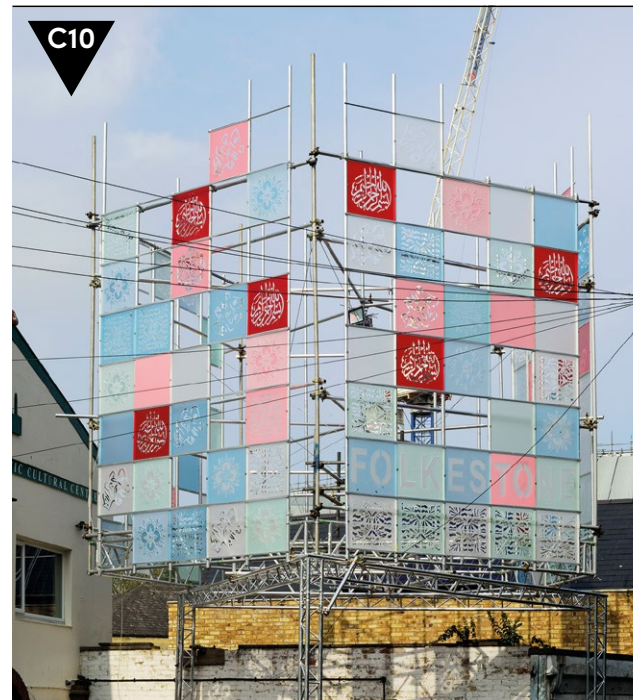
**C9 Location:** DEPEND.KICKBACKS.CARPENTRY

**Interreg**  
North Sea Region  
CUPIDO

European Regional Development Fund



EUROPEAN UNION

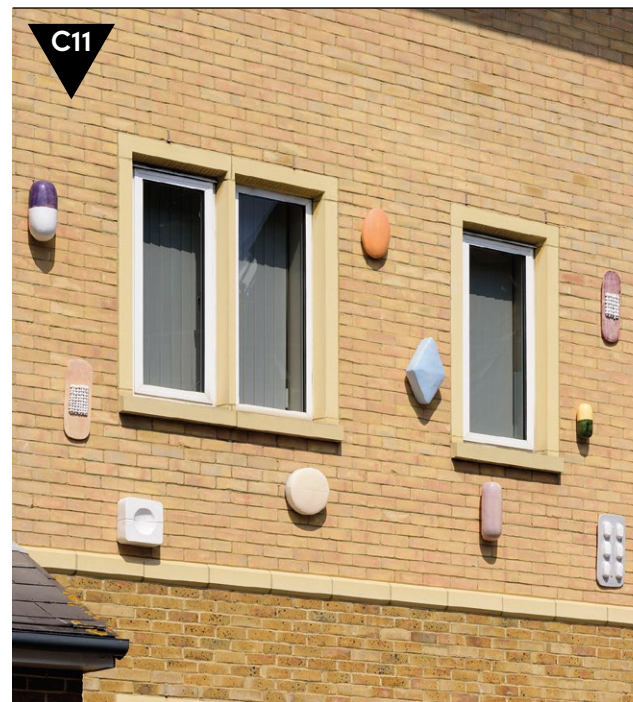


C10

**HoyCheong Wong,  
Simon Davenport  
and Shahed Saleem  
Nūr**

The industrial building now occupied by the Islamic Community Centre was one of the most important in Folkestone, incorporating a huge water-wheel driven by the Pent. The designs for the 10m high lantern were evolved through workshops with the Madrasa and wider Islamic community, while the artists have worked with the Centre's organising committee to present proposals for the future development of the building.

**C10 Location:**  
HOTELS.PURELY.SHOELACES

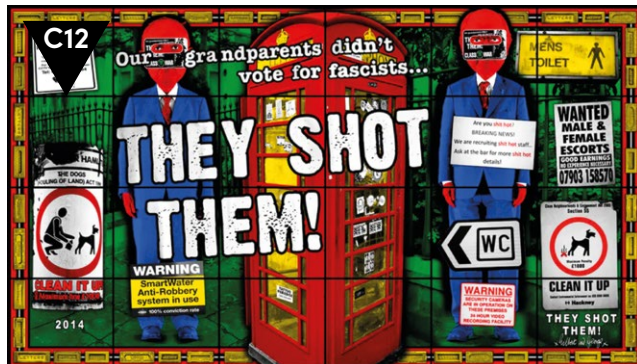


C11

**Stephenie Bergman**  
***Pills***

Before the development of literacy and graphic signs, shops would advertise by hanging up their wares outside the door: a kind of universal language of objects. These playful and beautiful ceramic sculptures mark the entrance to the Harbour Medical Practice, where many attenders do not have English as their first language.

**C11 Location:**  
SPITES.ADMIRINGLY.STIRS



**Gilbert & George**  
**THEY SHOT THEM 2014**

Exhibited courtesy of  
the artists.

There are two narratives  
in the picture, one about  
'cleaning up' sex, and  
another one about ending  
injustice through anarchy.

**C12 Location:**  
**TANGENT.FRIZZ.DRAGON**



**Gilbert & George**  
**CHAIN BRAIN 2019**

Exhibited courtesy of  
the artists.

Wearing chains as a fashion  
statement has been a part  
of contemporary life since  
the 1970s. Symbolically it  
evokes a lack of freedom.

**C13 Location:**  
**CHEEKS.WADES.RIPEN**



**Mike Stubbs**  
**Climate Emergency Services**

This sculpture on wheels highlights the value  
hierarchies of the motor industry: freedom,  
speed, excitement and pride. The cost of our  
addiction to these values is paid by wasteful  
production processes and the contribution of  
fossil fuels to climate change and ecological  
disaster. Concealed within this conflicted hot  
rod is a cool laboratory for studying the  
climate emergency; and a roving observatory  
for visiting festivals, schools and events.

**C14 Location:** **SPELL.VALUED.RESULTS**



**Tina Gverovic**  
**Surface Flows**

The roll-on roll-off ferry ramp was once the  
epicentre of Folkestone's economy and of its  
connectedness, bearing uncounted tonnes of  
goods and multitudes of people. The artist's  
images of floating clothing remind us of the  
flow of people and goods around the world,  
often by water, and generally reaching their  
destination, but sometimes foundering.

**C15 Location:** **BUZZ.LOWEST.MAGNITUDE**



**Assemble**  
**Skating Situations**

The artists have collaborated with local  
skaters to develop 'skateable sculptures'  
starting from the point of view of sporting  
and aesthetic interest rather than functional  
relation to the urban landscape. This group of  
sculptures complements and celebrates F51,  
Folkestone's Olympic standard indoor skate  
park, opening in 2021.

**C16 Location:**  
**TWIN.SKATE.CONGRATULATIONS**



**Atta Kwami**  
**Atsiafu fe agbo nu**  
**(Gateways of the Sea) 2020**

The artist is best known in this country for his  
colourful abstract paintings that refer among  
other things to architectural environments.  
This sculpture reverses that relationship  
between painting and architecture. It acts as  
a greeting, a welcome point and captures the  
excitement of arrival at a place where people  
meet at the edge of the sea.

**C17 Location:**  
**RECONNECT.INCLUDES.CLOTHING**

## Public Programme

**Dive deeper into the themes of the Folkestone Triennial with our programme of talks, tours and film screenings. All events are free, to find out more visit our website: [www.creativefolkestone.org.uk](http://www.creativefolkestone.org.uk)**

### Opening Weekend Events

#### ► Skate Jam and Pier Pressure 2021

F51, Creative Folkestone and Skate Folkestone present two weekends of skateboarding action.

**Saturday 24 July, from 1pm** Skate Jam: come skate *Skating Situations*, a Folkestone Triennial artwork, at the Harbour Arm.

**Saturday 31 July** Pier Pressure 2021: a free skateboarding festival.  
[www.instagram.com/folkestone51](https://www.instagram.com/folkestone51)

### Tours

**Meet at Quarterhouse – booking essential.**

#### ► Guided Tours

**Fridays: 10am, 2pm, 6pm\* and Sundays: 10am, 2pm, 4pm (duration 1 hour/up to 2 hours)**  
Folkestone Triennial tours are an exciting way to experience the town and the new exhibition. Our expert guides include artists, educators, a composer, a running coach, an explorer, an actor and a lecturer in film.  
\*6pm Friday tours will run until the end of August only.

#### ► Critics' Tours

**Saturdays 11am and 2.30pm (duration 2 hours)**  
Join an art critic and tour artworks.  
**31 July** Will Jennings, independent artist, writer and curator.  
**28 August** Skye Sherwin, art writer for *The Guardian*.  
**25 September** Jennifer Thatcher, art critic and course leader at Sotheby's.  
**30 October** Richard Dyer, Editor-in-Chief, *Third Text*.

#### ► Take Your Own Tour of the Artworks

**Online and in person**

Plan, personalise and take your friends, family or colleagues on a tour of the Triennial at a time, date and distance that suits you.

#### ► Audio Tours with curator Lewis Biggs and guests

**Listen on your own device**

Join Folkestone Triennial curator Lewis Biggs while touring Plot A, B or C. For more information visit the website.

### Talks

#### ► Intersections – The Story of Folkestone Mosque

**Saturday 24 July, 6.30pm, Folkestone Islamic Cultural Centre and Quarterhouse**  
HoyCheong Wong, Shahed Saleem and Simon Davenport with Faruk Miah and Shaheen Chowdhury from Folkestone Mosque, on collaboration, making the artwork *Nūr* and the story of mosques in Britain. Chair: Remona Aly.

#### ► Emergency on Planet Folkestone

**Saturday 4 September, 6.30pm, Quarterhouse**  
Join our panel as we tackle some difficult questions. With environment expert Nicholas Thurston and artist Mike Stubbs. Chair: Charlotte Sleigh.

#### ► Breath and Water, Blood and Bones

**Saturday 2 October, 4pm–7pm, St Mary and St Eanswythe's Church**  
Historian Lesley Hardy, Dr Sarah Montgomery and musician Grenville Hancox explore William Harvey, St Eanswythe and the circulation of breath, blood and myth in this ancient building. Chair: Joanna Labon.

#### ► The Plot in *The Clearing*, Quarterhouse

**Wednesdays 6.30pm – seven hosted talks with expert speakers, drinks and conversation**  
**15 September** Emily Ghassempour: *Why Diversity in Stories Matters*.  
**22 September** Helen Lindon: *Art and Activism, Sea Levels and Folkestone*.

**29 September** Brendan Walker: *Folkestone Through the Eyes of a Thrill Engineer*.

**6 October** Bob and Roberta Smith: *What Art Education Can Do For A Town*.

**13 October** Dan Atkinson: *Plottymouth: Comic Triennial Review and Striptease* (weather dependent).

**20 October** Pippa Catterall: *Art, Placemaking and Inclusion*.

**27 October** Lewis Biggs: *Plotting: An Evening to Celebrate, Ask and Be Asked Questions*.

### Films

#### ► Still Reeling – Films by and About Folkestone Triennial Artists

**Friday 3 September, 6.30pm**

Celebration of artist Jyll Bradley with the world premiere of her film *M.R.* (2021)

**Saturday 4 and Sunday 5 September, 10am–4pm**

Films from Pilar Quinteros, Jacqueline Donachie, Tina Gverović, Patrick Corillon and more. World premiere of documentary *Stephenie Bergman (work in progress)* (2021 dir. Rafael Ortega Ayala).

### Artist-led events

#### ► On the Circulation of Blood

**Saturday 21 July: The Durlocks,**  
**Saturday 14 August: Market Place,**  
**Saturday 16 October: The Lower Leas**  
Sam Belinfante processions and performances, with illuminated evening events plus choreographed light display.

#### ► Terrarium

**A public programme exploring the exhibition's connection to Kent**  
Shezad Dawood explores the Kent coastline with researchers and activists.  
[www.upprojects.com/projects/the-terrarium](http://www.upprojects.com/projects/the-terrarium)

#### ► Circulation Revisited

**Thursdays 6:30pm, 9 September: Capital, 16 September: Blood, 23 September: People**  
Talks curated by Christopher Houghton Budd that respond to William Harvey's discovery of the circulation of the blood.

### Urban Room Folkestone 2017

Exhibitions, workshops and talks giving insight into the town's history and geography, celebrate its stories and expand thinking about its future development.  
[www.urbanroomfolkestone.net](http://www.urbanroomfolkestone.net)

#### ► Let's Play Plaza

A selection of events to accompany and contextualise Christopher Houghton Budd's artwork *Forgiving Light*.

#### ► FORTUNE HERE

Talks and discussions with genuinefake on urban rooms, community interventions, and the future of Folkestone.

### FOLKESTONE IS AN ART SCHOOL

**A conceptual framework inviting creative activities and contributions.**

Workshops, mentoring, portfolio reviews, exhibitions and events. More details to be announced.

### National Student Days

#### ► National Student Days

**Thursday 21 and Friday 22 October, 10.30am–5pm, Quarterhouse**  
Gathering students from universities and colleges across the UK. Guided tours, panel talks from the Triennial team, film screenings and quiz.

#### ► The Matter of Circulation

**Saturday 23 October, 10.30am–5pm**  
Postgraduate research event with keynote speakers Prof. Lewis Biggs and Dr Gilda Williams. How is art and design able draw our attention to the gap between narrative and reality, promise and execution from a material perspective?

## Education

All Saturday family workshops are free, drop-in sessions at our studio at Block 67, Mill Bay, Folkestone, CT20 1JG. Just turn up. All workshops are run according to current government guidelines.



### ► Play Making with Leap Then Look

**Saturday 4 September and 18 September, 12pm–4pm**

How can we create a space to play and make? Join artists Leap Then Look to create a playful, ever-changing installation which will grow and evolve over the course of the day. Inspired by Folkestone Triennial themes, we will explore different sets of materials, encouraging families to work together to make structures, create games and build a shared collaborative environment.



### ► Power Objects with Katrin Albrecht

**Saturday 11 September, 11am–3pm**

Taking inspiration from Mariko Hori's sculptures, *Mellowing the Corners*, come and make your own object of power. We will be looking at examples from different cultures for inspiration. Bring something tiny and personal like a bead, ribbon, pebble, whisker, twig, hair, image or whatever small item you would like to work into your object.



### ► The Best in Us with Young Animators

**Saturday 25 September, 11am–3pm**

Create a Jason Wilsher-Mills inspired colourful character and bring it to life. Animate your character dancing or waving and even interact with your character using augmented reality. Jason Wilsher-Mills' drawings and sculptures are a salute to all that makes us unique and celebrate strong personalities. We will find out about the brilliant personalities of some amazing Folkestonians; the one next door, the ones from history and the ones that make our town great. Give your character that part of you that makes you brilliant, and share your work in a celebration of big, colourful personalities.



### ► Drawing Sculpture with Jeni Johnson

**Saturday 2 October, 11am–3pm**

Inspired by Stephenie Bergman's ceramic sculptures that play on the forms we associate with medicine – from pills to organs, veins and arteries – we will experiment with drawing with clay and wood to create our own playful, wearable sculpture objects.



### ► 360 Folkestone with Young Animators

**Saturday 9 October, 11am–3pm**

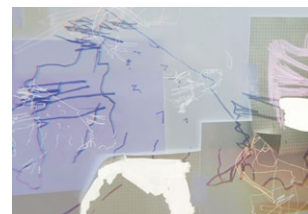
Envisage Folkestone in the distant future and take us there. Join artist and animator Lydia Hibbert to create a multimedia scene inspired by the immersive environments of Shezad Dawood. Photograph your artwork using a 360-degree camera and then step inside your own world using a Virtual Reality headset.



### ► All Experiences Dissolve Into Experience with Sam Ayres

**Saturday 16 October, 11am–3pm**

Inspired by the Folkestone Triennial themes of circulation of blood and the movement of water, we will work with inks on recycled and reclaimed materials, exploring the flow of knowledge and how learning connects our brains and bodies to the world around us.



### ► Looking Re-looking with Nicole Cowan

**Saturday 23 October, 11am–3pm**

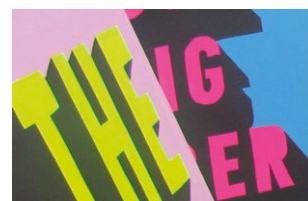
Inspired by Jaqueline Poncelet's *Looking Ahead*, we will think about how we can view something in many different ways. Creating our own viewfinders, we will use photography, drawing and projections to fill the space and create a layered installation by looking, re-looking and then looking again!



### ► Plotting with Emily Martin

**HALF TERM Wednesday 27 October, 11am–3pm**

Inspired by Folkestone Triennial's theme *The Plot*, we will look at three historic Folkestone narratives and their journeys within cartography. Referring to the passages of movement, we will create unique and personal maps of Folkestone and explore mark making through various printing techniques.



### ► Celebrate Folkestone with Louella Ward and Hannah Lucas

**Saturday 30 October, 11am–3pm**

Create your own Morag Myerscough inspired placards! We will experiment with poetry, collage and painting to make statements celebrating Folkestone, and what it means to belong and connect with one another.

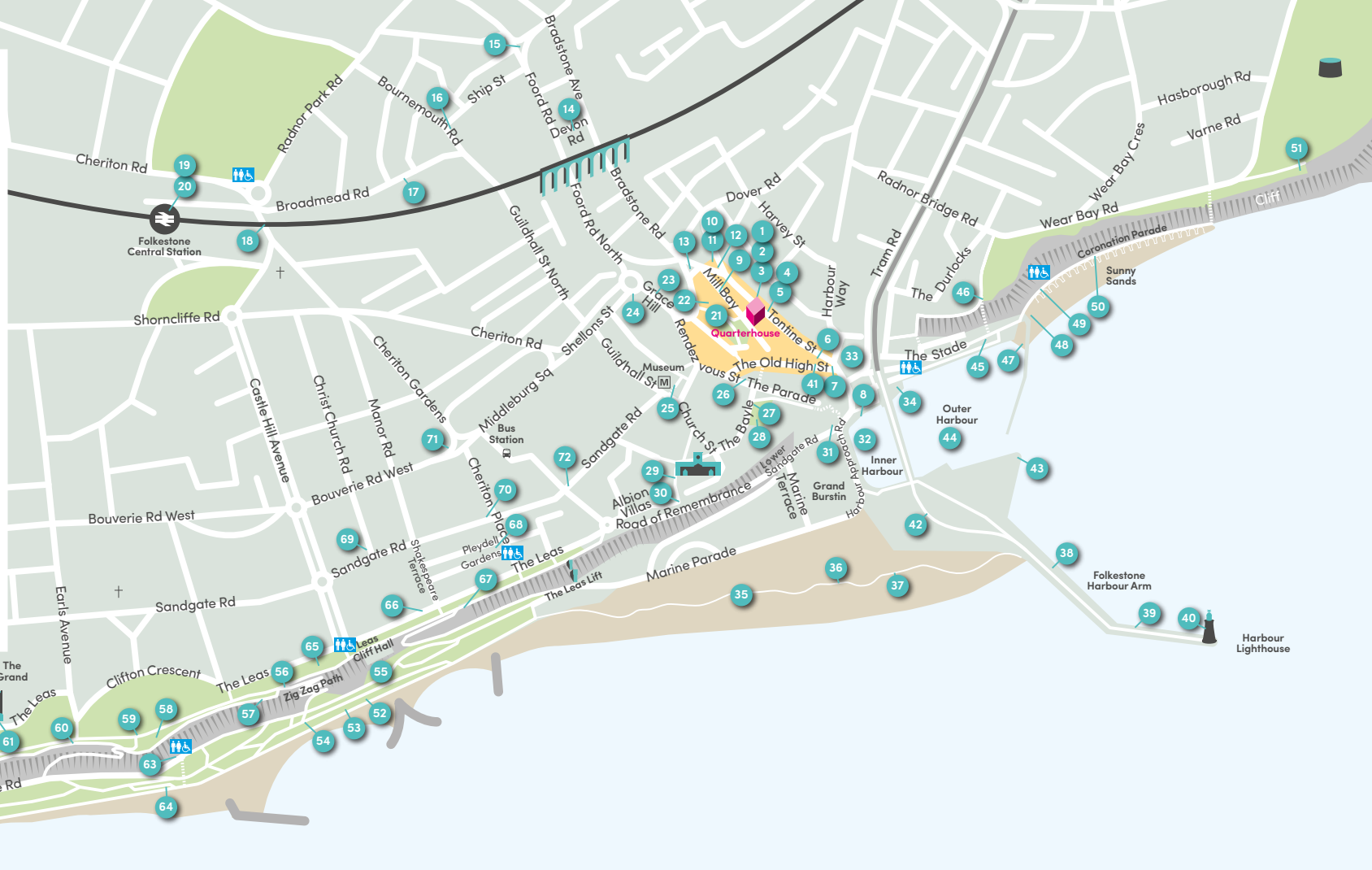


Scan the QR code to find all of our Folkestone Triennial creative resources for primary schools, secondary schools and families... For information on our schools' programmes please contact [taniamccormack@creativefolkestone.org.uk](mailto:taniamccormack@creativefolkestone.org.uk)



## Creative Folkestone Artworks

Folkestone Artworks, the UK's largest urban contemporary art exhibition, is free and accessible 24 hours a day, 365 days a year. Sited outdoors around the town and harbour, the artworks pop up in both scenic and surprising locations. The changing exhibition, currently consisting of 73 artworks by 46 artists in 73 locations – including Tracey Emin, Antony Gormley, Yoko Ono, Mark Wallinger, Cornelia Parker, Bill Woodrow, Michael Craig-Martin and Ian Hamilton Finlay – offers an experience like nowhere else in the world: great contemporary art with an invitation to explore, examine and understand the town's geography, history and potential future.



- 1 Studio Ben Allen, *The Clearing*
- 2 Yoko Ono, *SKYLADDER*
- 3 Diane Dever and Jonathan Wright, *Pent Houses 1-5*, (3)
- 4 Nathan Coley, *Heaven Is A Place Where Nothing Ever Happens*
- 5 Jonathan Wright, *Fleet On Foot*, (10)
- 6 Diane Dever and Jonathan Wright, *Pent Houses 1-5*, (4)
- 7 Michael Craig-Martin, *Folkestone Lightbulb*
- 8 Diane Dever and Jonathan Wright, *Pent Houses 1-5*, (5)
- 9 Tracey Emin, *Baby Things*
- 10 Sinta Tantra, *1947*
- 11 rooftwo, *Whithervanes: A Neurotic Early Worrying System (NEWS)*, (1)
- 12 Amalia Pica, *Souvenir*

- 13 Diane Dever and Jonathan Wright, *Pent Houses 1-5*, (2)
- 14 Richard Wentworth, *Racinated*
- 15 Diane Dever and Jonathan Wright, *Pent Houses 1-5*, (1)
- 16 Amalia Pica, *Souvenir*
- 17 Amalia Pica, *Souvenir*
- 18 Strange Cargo, *The Luckiest Place On Earth*
- 19 Tracey Emin, *Baby Things*
- 20 Bob and Roberta Smith, *FOLKESTONE IS AN ART SCHOOL*
- 21 muf Architecture/Art, *Payers Park*
- 22 Rigo 23, *Through The Glassworks and Earth's Oldest Satellite*
- 23 Yoko Ono, *SKYLADDER*
- 24 Richard Wentworth, *Racinated*
- 25 Amalia Pica, *Souvenir*

- 26 Amalia Pica, *Souvenir*
- 27 Tracey Emin, *Baby Things*
- 28 Tracey Emin, *Baby Things*
- 29 Richard Wentworth, *Racinated*
- 30 Richard Wentworth, *Racinated*
- 31 Hamish Fulton, *31 Walks From Water To Water 1971-2010*
- 32 Tonico Lemos Aua, *Carrancas*
- 33 Diane Dever and The Decorators, *Urban Room Folkestone*
- 34 rooftwo, *Whithervanes: A Neurotic Early Worrying System (NEWS)*, (2)
- 35 Lubaina Himid, *Jelly Mould Pavilion*
- 36 A K Dolven, *Out Of Tune*
- 37 Sol Calero, *Casa Anacaona*
- 38 Antony Gormley, *Another Time XVIII*
- 39 Patrick Tuffuoco, *FOLKESTONE*

- 40 Ian Hamilton Finlay, *Weather Is A Third To Place And Time*
- 41 Banksy, *Art Buff*
- 42 Paloma Varga Weisz, *Rug People*
- 43 Richard Woods, *Holiday Home*
- 44 Richard Woods, *Holiday Home*
- 45 Sarah Staton, *Steve*
- 46 Tracey Emin, *Baby Things*
- 47 Michael Sailstorfer, *Folkestone Digs*
- 48 Cornelia Parker, *The Folkestone Mermaid*
- 49 Gary Woodley, *Impingement No. 66 'Cube Circumscribed By Tetrahedron - Tetrahedron Circumscribed By Cube'*
- 50 Tracey Emin, *Baby Things*
- 51 Marc Schmitz and Dolgor Ser-Od, *Siren*

- 52 Bill Woodrow, *The Ledge*
- 53 Richard Wilson, *18 Holes*
- 54 Richard Wentworth, *Racinated*
- 55 Adam Chodzko, *Pyramid*
- 56 Ruth Ewan, *We Could Have Been Anything That We Wanted To Be*
- 57 Will Kwan, *Apparatus #9 (The China Watchers: Oxford University, M16, HSBC)*
- 58 Christian Boltanski, *The Whispers*
- 59 David Shrigley, *Lamp Post (As Remembered)*
- 60 Spencer Finch, *The Colour Of Water*
- 61 Yoko Ono, *Earth Peace*
- 62 Cristina Iglesias, *Towards The Sound Of Wilderness*
- 63 Richard Wentworth, *Racinated*

- 64 Pablo Bronstein, *Beach Hut In The Style Of Nicholas Hawksmoor*
- 65 Mark Wallinger, *Folk Stones*
- 66 Richard Wentworth, *Racinated*
- 67 Richard Wentworth, *Racinated*
- 68 Pae White, *Barking Rocks*
- 69 Richard Woods, *Holiday Home*
- 70 Richard Wentworth, *Racinated*
- 71 Richard Wentworth, *Racinated*
- 72 Tracey Emin, *Baby Things*



Mark Dion, *Mobile Gull Appreciation Unit* (Not in fixed location. Displayed at special events.)

## Quarterhouse

**Quarterhouse is the award-winning performing arts hub of Creative Folkestone.**

Based on Tontine Street, in the heart of Folkestone's Creative Quarter amidst a vibrant community of artists' studios, shops, bars and spaces, Quarterhouse presents a year-round programme of contemporary theatre, dance, music, comedy, film, live screenings and family shows. Quarterhouse also supports artist development, our creative community, and many local festivals.

This autumn look out for:

- ▶ Edgy music gigs from The Staves and This Is The Kit
- ▶ Searing comedy from Mark Watson and Bridget Christie
- ▶ Flamenco- and Kathak-inspired performances from Agudo and Pagrav Dance Companies
- ▶ Brilliant theatre by Frozen Light and Emily Jenkins
- ▶ Mrs H & the Singalong Band who will provide our popular wig-out for toddlers
- ▶ Our monthly Documentary Club screenings – Doc Club, and
- ▶ A brand-new Documentary Film Festival

We round off the year on Sunny Sands beach with *Beacons*, a specially composed sound and light installation on the winter solstice by Folkestone-based artist and scenographer **Alison Neighbour** with composer **Emily Peasgood**.

For more information or to book tickets visit our website or call our Box Office on 01303 760740.



## Creative Quarter

**Folkestone's Creative Quarter is an urban village of designers, filmmakers, musicians, web developers and artists.**

A stone's throw from the sea and less than an hour from London, Folkestone's Creative Quarter is home to hundreds of creatives who contribute to and support the creative community, making Folkestone one of the best places in the world... but we would say that wouldn't we?

Don't take our word for it, get lost in the Creative Quarter and see what you can find.

- ▶ **Save the date... why not join us for Open Quarter and explore the area's hidden spaces from Friday 10 – Friday 17 September 2021.**



## Folkestone Fringe Triennial 2021

Since its inception in 2008, the Creative Folkestone Triennial has been accompanied by a Fringe programme.

The Folkestone Fringe team apply their knowledge, skills and experience, gathered through working in our communities over the last 12 years, to enable these programmes to form. At the core of this work is an awareness of the role that the arts plays in accessing and articulating both individual and societal meaning. And for 2021, we want to play our part in using the arts and creativity to reflect, heal and build for the future – through existing and new ways.

### What's Happening, Exactly?

This year, the Folkestone Fringe Triennial 2021 programme cultivates across 3 platforms: 'Curated', 'Open' and 'Associates'

#### 1. Curated – 'What's Happening, Exactly?'

A curated platform of 40 events, including the work of 6 selected, Folkestone-based artists, and powered by a new graduate artist/curator initiative – GLUE.

#### 2. Open – 'SubPlot'

Fringe Open collates proposals from across the whole of Folkestone, by acting as the central showcase to promote any creative activity happening alongside Folkestone Triennial. No matter your age, background, or experience, Fringe Open supports diverse voices to step onto public platforms.

#### 3. Associates – 'Chapters'

The Associates platform, entitled 'Chapters', amplifies the activities of local arts organisations who have devised and developed their own programming during Folkestone Triennial. Acting as a go-to hub, the platform provides a single channel of information for residents and visitors to enjoy the dynamic cultural activity taking shape across the town, all at once.

- [www.folkestonefringe.com/festivals/folkestone-triennial-2021](http://www.folkestonefringe.com/festivals/folkestone-triennial-2021)

## Become a Creative Folkestone Member

Since 2002, the work of Creative Folkestone has enabled thousands of people from all backgrounds to live, work, create, play, learn and perform.

As a charity, we rely on the generosity of all our supporters to continue enabling the creative community in Folkestone to flourish.

Join us as a Creative Folkestone Member and discover a diverse and exciting range of discounts, events and opportunities.

- For more information on becoming a member, please visit: [www.creativefolkestone.org.uk/join-and-support](http://www.creativefolkestone.org.uk/join-and-support)
- Donate and help us to keep Folkestone creative. Visit our website to donate online or text CREATIVEFOLKESTONE to 70085 to donate £3 to our Learning and Engagement Programme. [www.creativefolkestone.org.uk/join-and-support](http://www.creativefolkestone.org.uk/join-and-support)

## Thank you to our supporters...

Sponsored by

SAGA

Founding Funder

THE ROGER  
DE HAAN  
CHARITABLE TRUST

Supported by



ARTS COUNCIL  
ENGLAND



Artwork Supporters



Triennial Supporters



Hollaway



Architecture | Surveying | Cost Consultants

Neat



Quinn  
Homes

In Kind  
Bagnalls  
Dulux Decorator Centre  
CCP Structures

## **Creative Folkestone Triennial 2021** **Thursday 22 July – Tuesday 2 November** **Free and open to all**

### **About**

Folkestone Triennial is one of the UK's largest exhibitions of newly commissioned work. Artists are invited to use the town as their gallery creating striking artwork that reflects issues affecting both the town and the wider world. Returning in 2021 for the fifth time, we are delighted to present *The Plot*.

Immerse yourself in a virtual world, find secret artworks, learn the latest dance craze, kickflip over a sculpture, wonder at the urban myths of Folkestone and so much more.

For more information about Folkestone Triennial including artist interviews, educational resources and more visit our website: [www.creativefolkestone.org.uk](http://www.creativefolkestone.org.uk)

### **Visiting Folkestone Triennial**

The visitor centre for Folkestone Triennial is located at **Quarterhouse (Mill Bay, Folkestone CT20 1BN)**. Open daily from 10am–5pm. Head to the visitor centre to grab your exhibition guide, book events or make use of the toilets and changing facilities. Many of the artworks will be staffed daily by our friendly team of Hosts. To help plan your visit to Folkestone visit our website: [www.creativefolkestone.org.uk](http://www.creativefolkestone.org.uk)

### **Park and Ride**

Pay just £5 to park all day and catch the shuttle bus to Folkestone and the Harbour. The new service will run from the Motis Business Centre in Cheriton near J12 of the M20, CT19 4 QJ. This service will operate every weekend until October and daily during the summer holidays. Shuttle buses will run every 30 minutes between 9am and 6pm to Folkestone Harbour via Folkestone Central Station.

Drone photography by Tom Bishop Photography.  
All other artwork photography by Thierry Bal.

### **Access**

There is wheelchair and motorised scooter access to as many artworks as possible and we have done our best to highlight step free routes around the exhibition. However, due to the historic nature of the town, some artworks are less accessible. Where possible we will provide BSL interpretation at events and large print information. If there is anything we can do to make your visit easier, our team will be more than happy to help. Please contact [info@creativefolkestone.org.uk](mailto:info@creativefolkestone.org.uk)

### **Public Programme**




With a packed schedule of talks, tours and more, our Public Programme gives you an opportunity to dive deeper into the ideas and themes of *The Plot*. For more information visit page 26 of this booklet or visit our website for more details.

### **Schools and education**

Throughout Folkestone Triennial, we are offering workshops and fun activities for children and families to get creative. If you would like your school to get involved, contact [taniamccormack@creativefolkestone.org.uk](mailto:taniamccormack@creativefolkestone.org.uk) or turn to page 28.

### **Get in touch**

Share your experiences from *The Plot* and tag us in your best photos and videos:

 /creativefolkestone  
 @CreativeFstone  
 @creativefstone

If you have any comments or suggestions about Folkestone Triennial or any of our projects, please email us at [info@creativefolkestone.org.uk](mailto:info@creativefolkestone.org.uk)

### **Tell us what you think**

More than ever, it is vital we learn what you thought of this year's Creative Folkestone Triennial. Please complete a short anonymous survey by scanning the QR code. Your honest feedback is invaluable.

